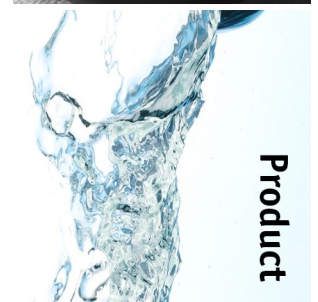
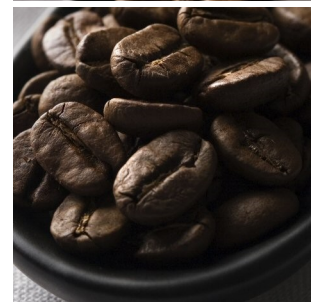
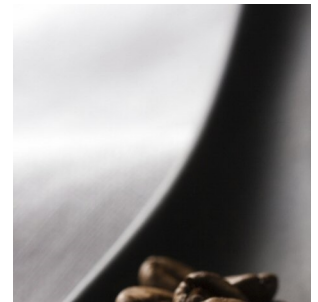


Nio 20.2.1 FM [c] CoEx® bean2cup Fresh Milk



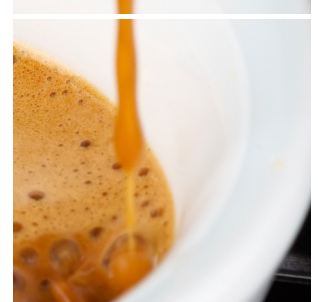
reddot award 2014
winner



Product



Information



Key features

- Visible beans & ingredient canisters
- 3rd ground coffee selections
- Fresh Milk from external 4 Liter fridge
- CoEx® brewer & 2 whole bean grinder
- 10.4" high res full color touch screen
- Illuminated ingredient canisters
- Keyless cleaning & operation

Options

- Branding and/or customized colors
- On-screen communication options
- Connect.Me® (online monitoring)
- Base cabinet (with condiment tray's)
- Increased capacities
- Waste guide & drain
- Table between base and machine

Nio 20.2.1 FM [c] CoEx® bean2cup Fresh Milk



Dimensions

	inch
Machine	h 23.6
	w 18.1
	d 21.3
Base Cabinet	h 33.5
	w 18.1
	d 21.3
Weight	77 lb

Specifications

- 3rd Ground Coffee shute [2]
- MoVeC-ICEq® & USB upload
- 10,4" resolution : 800x600
- User Interface : DJD/Nio
- Menu structure or direct start
- Cleaning pill entrance [6]
- Multiple languages possible
- Cup sensors [3]
- Strength selections menu's
- External Milk fridge 4 Liter
- Boiler : 2x 0.4L
- Pressure : max 12 Bar

Connections

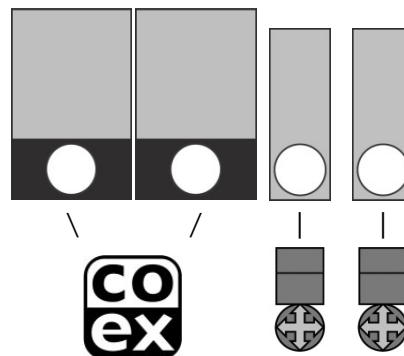
- 100-120 Volt AC
- 50/60 Hz
- 1800 Watt
- ¾" BSP [15 mm] mains
- waterfilter & waterlock recommended
- USB (outside access)
- LAN or Wifi

Selections

Whole Bean Coffee	Hot Chocolate
Espresso	Chocomilk
Double Espresso	Espresschoc
Whole Bean Coffee II	Cappuccino
Espresso II	Cappuccino II
Double Espresso II	Cafe au Lait
Latte Macchiato	Cafe Latte
Customized recipes **	French Vanilla
Chilled (sparkling) water **	Hot water

** optional, ask for details & conditions

Canisters



Capacities

	#	Size	lbs	Cups
Whole Bean Coffee I	1	NBC	2.43	150
Whole Bean Coffee II	2	NBC	2.43	150
Chocolate	3	63	2.78	55
French Vanilla	4	63	2.78	55
3rd Ground Coffee				
Fresh Milk [external fridge]				1 Gallon
Waste bucket [accessible from outside]				≥ 100

(# cups may vary depending on settings)

